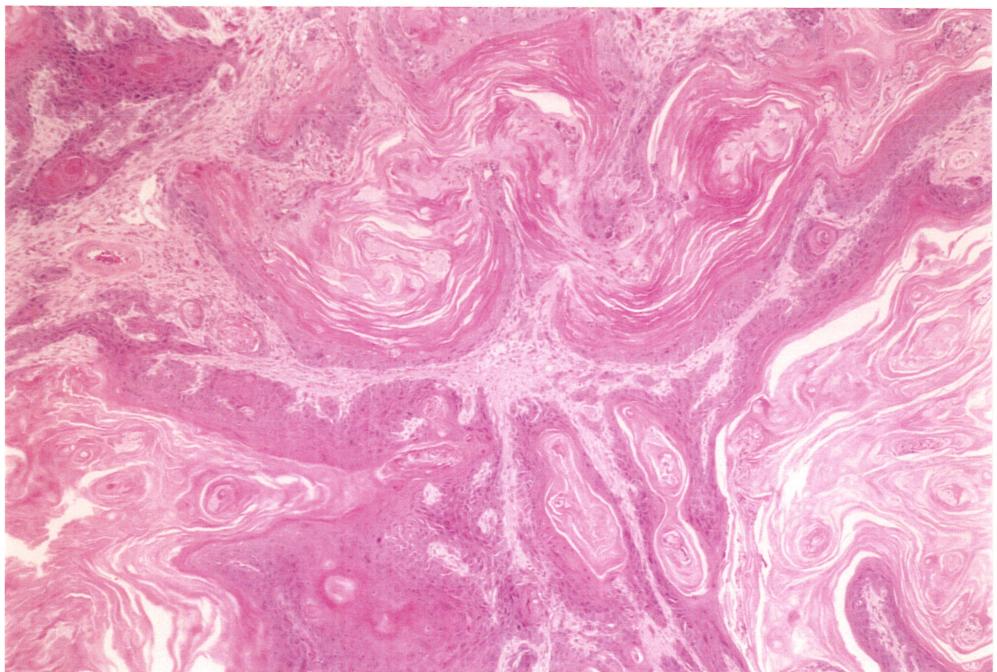


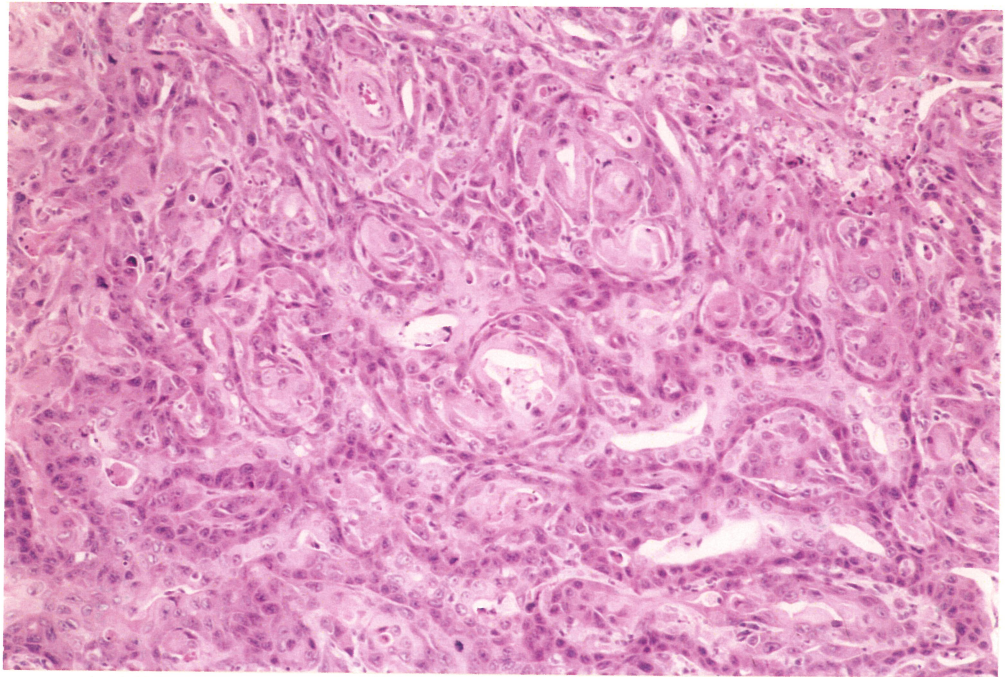
PHOTOGRAPHS



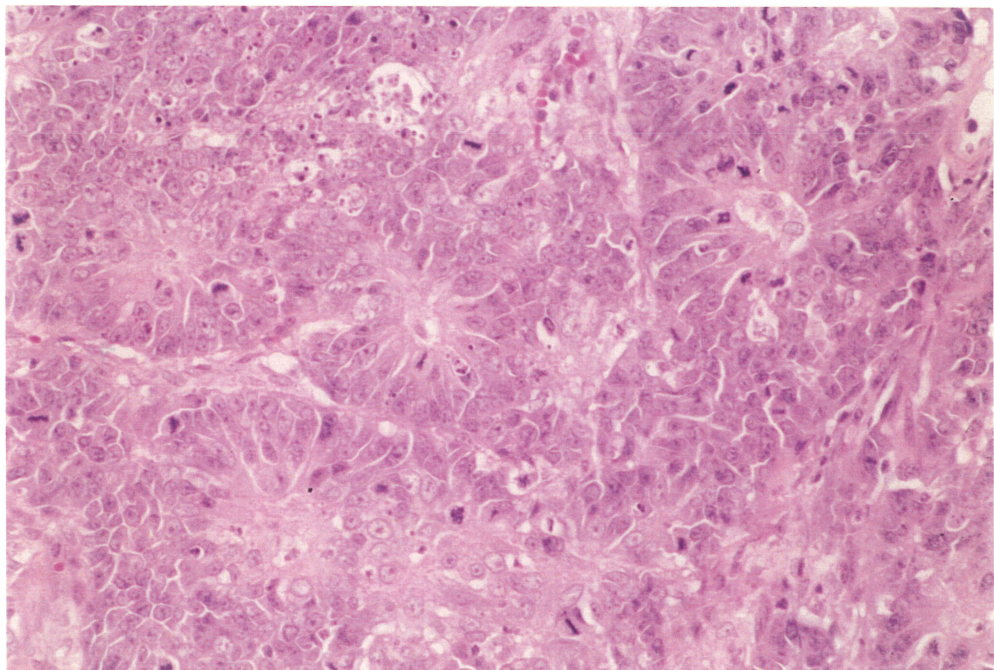
PHOTOGRAPH 1 NASAL MASS
RAT, FEMALE, 5000ppm, ANIMAL NO.0063-2336



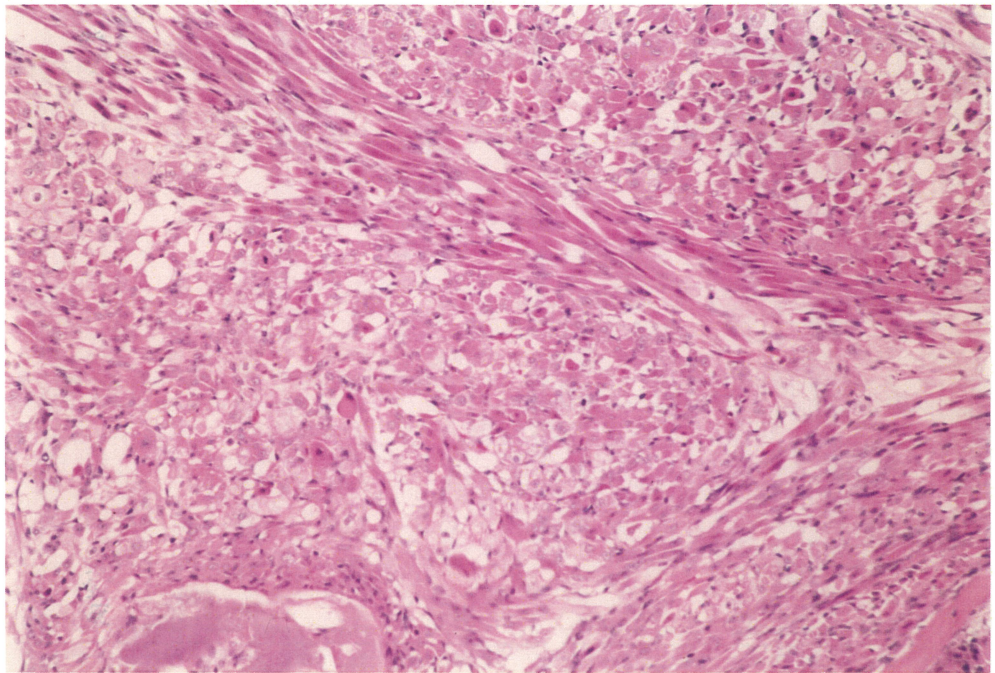
PHOTOGRAPH 2 NASAL CAVITY (LEVEL 2),
SQUAMOUS CELL CARCINOMA(WELL-KERATINIZING)
RAT, FEMALE, 5000ppm, ANIMAL NO.0063-2336 (H.E., X60)



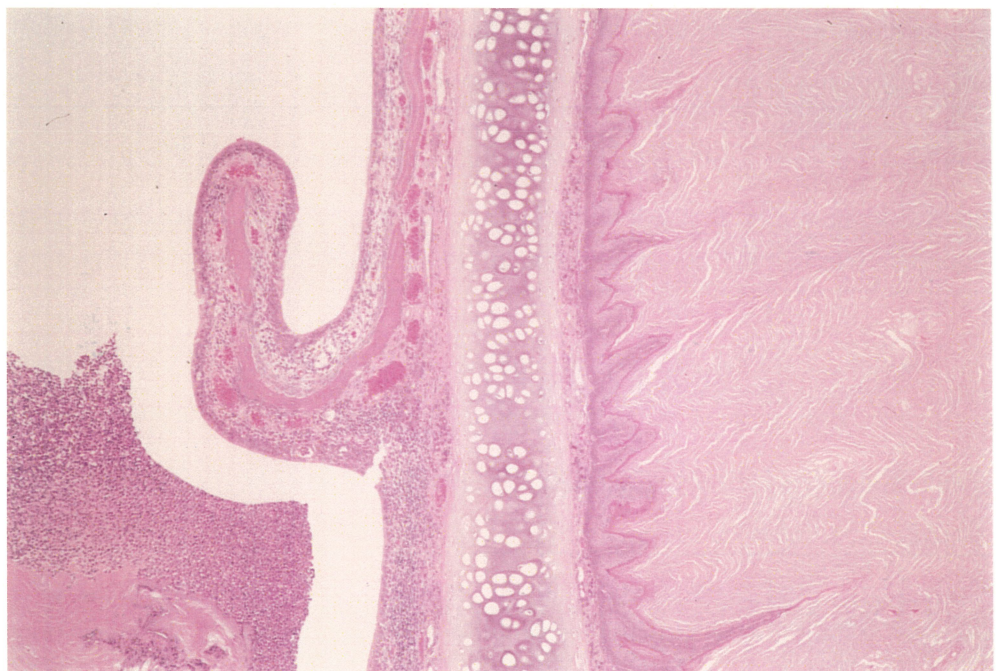
PHOTOGRAPH 3 NASAL CAVITY (LEVEL 2),
SQUAMOUS CELL CARCINOMA (MUCO-EPIDERMOID)
RAT, FEMALE, 5000ppm, ANIMAL NO.0063-2336 (H.E., X150)



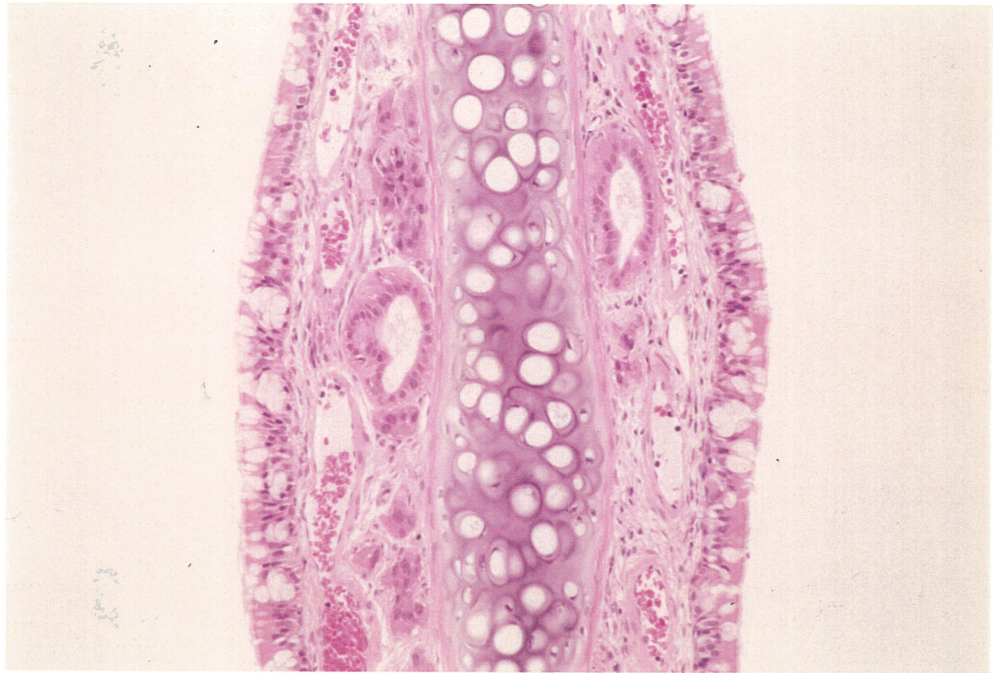
PHOTOGRAPH 4 NASAL CAVITY (LEVEL 2), ETHESIONEUROEPITHELIOMA
RAT, MALE, 5000ppm, ANIMAL NO.0063-1323 (H.E., X300)



PHOTOGRAPH 5 NASAL CAVITY (LEVEL 2), RHABDOMYOSARCOMA
RAT, MALE, 5000ppm, ANIMAL NO.0063-1318 (H.E., X150)



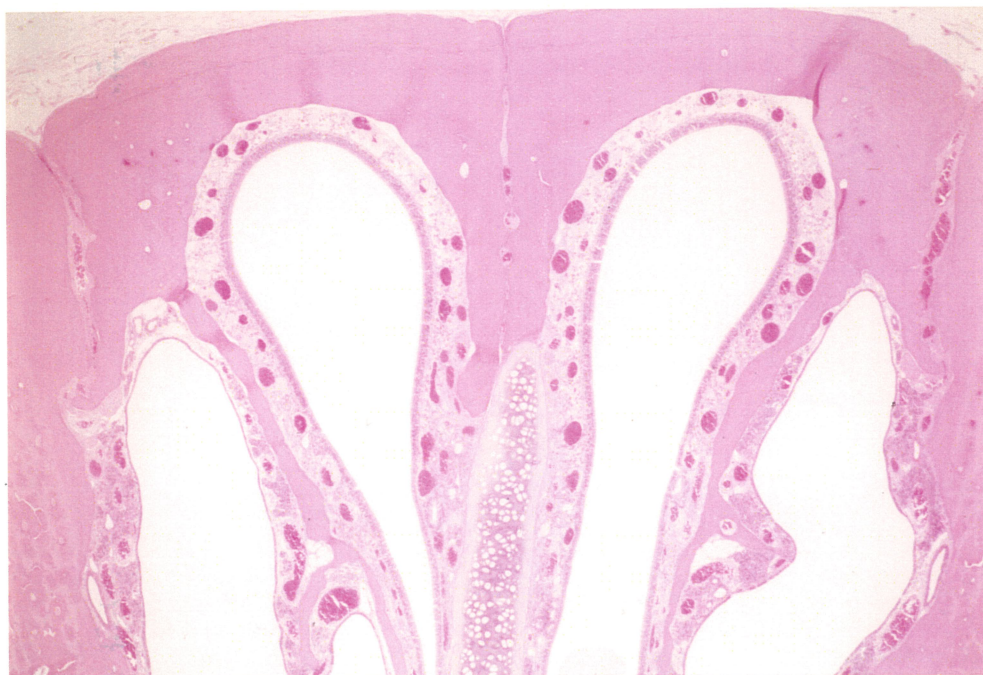
PHOTOGRAPH 6 NASAL CAVITY (LEVEL 2), SQUAMOUS CELL HYPERPLASIA,
INFLAMMATION, ADHESION(NASOTURBINATE, NASAL SEPTUM)
RAT, FEMALE, 5000ppm, ANIMAL NO.0063-2343 (H.E., X60)



**PHOTOGRAPH 7 NASAL CAVITY (LEVEL 1, NASAL SEPTUM), NON-REMARKABLE
RAT, FEMALE, CONTROL, ANIMAL NO.0063-2003 (H.E., X150)**



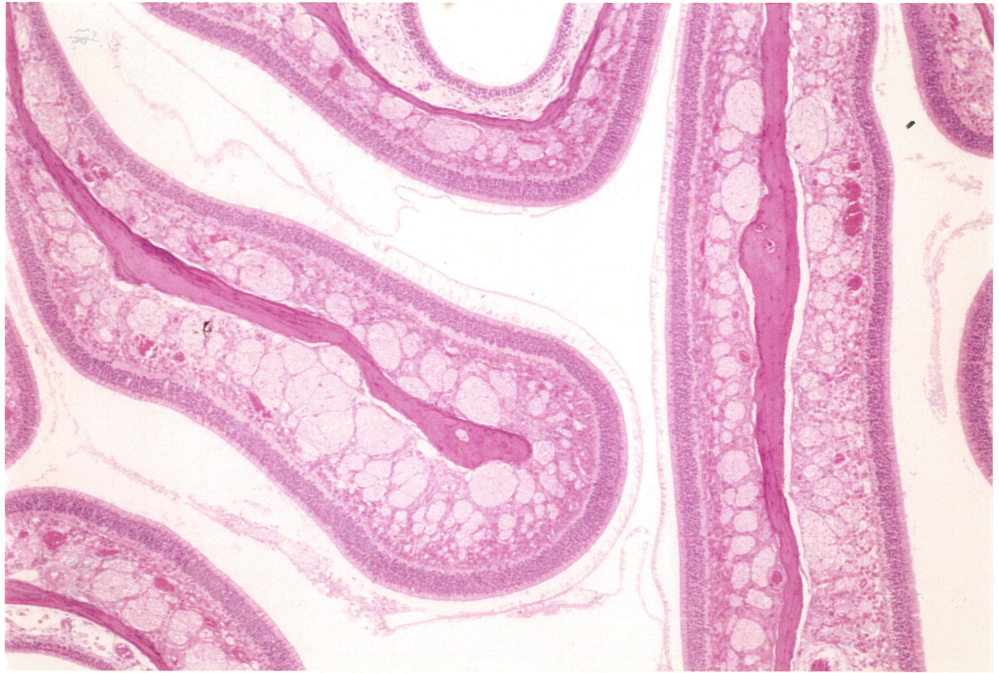
**PHOTOGRAPH 8 NASAL CAVITY (LEVEL 1, NASAL SEPTUM),
SQUAMOUS CELL METAPLASIA,
RAT, FEMALE, 5000ppm, ANIMAL NO.0063-2318 (H.E., X150)**



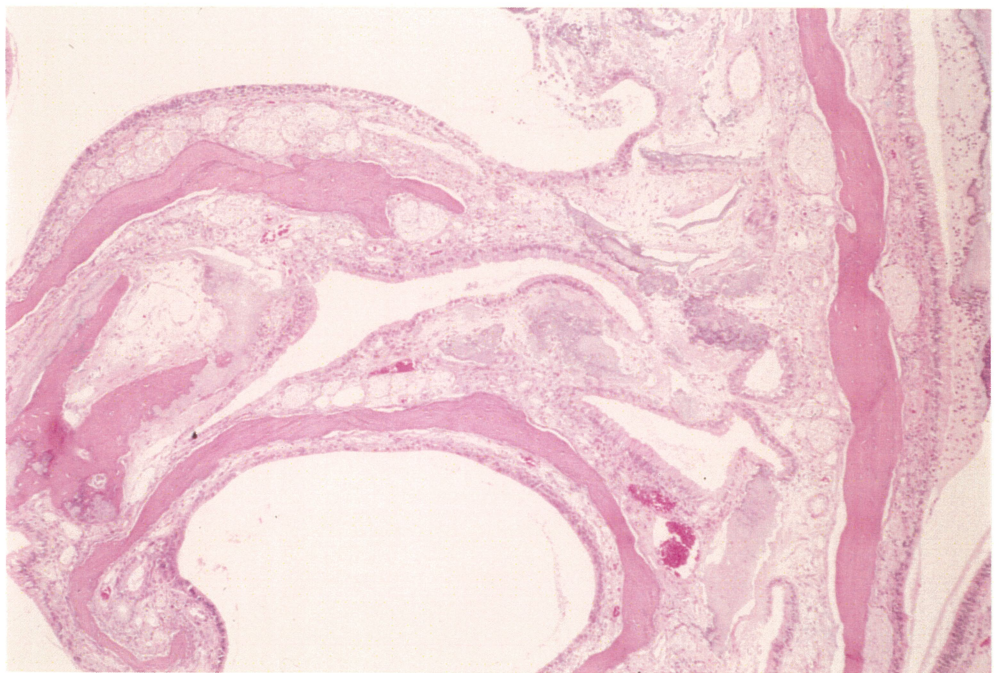
PHOTOGRAPH 9 NASAL CAVITY (LEVEL 2, DORSAL), NON-REMARKABLE
RAT, FEMALE, CONTROL, ANIMAL NO.0063-2013 (H.E., X30)



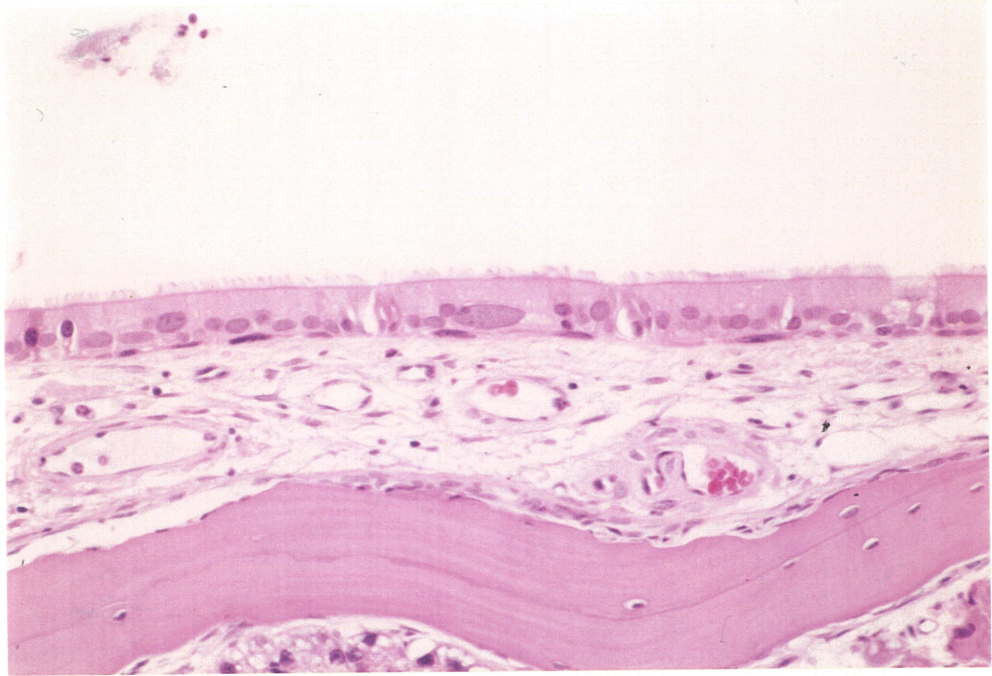
PHOTOGRAPH 10 NASAL CAVITY (LEVEL 2, DORSAL), HYDROPIC CHANGE:LAMINA PROPRIA
WITH DEPOSIT OF CALCIUM, PROLIFERATION:NASAL GLAND,
ADHESION(NASOTURBINATE, NASAL SEPTUM)
RAT, FEMALE, 5000ppm, ANIMAL NO.0063-2343 (H.E., X30)



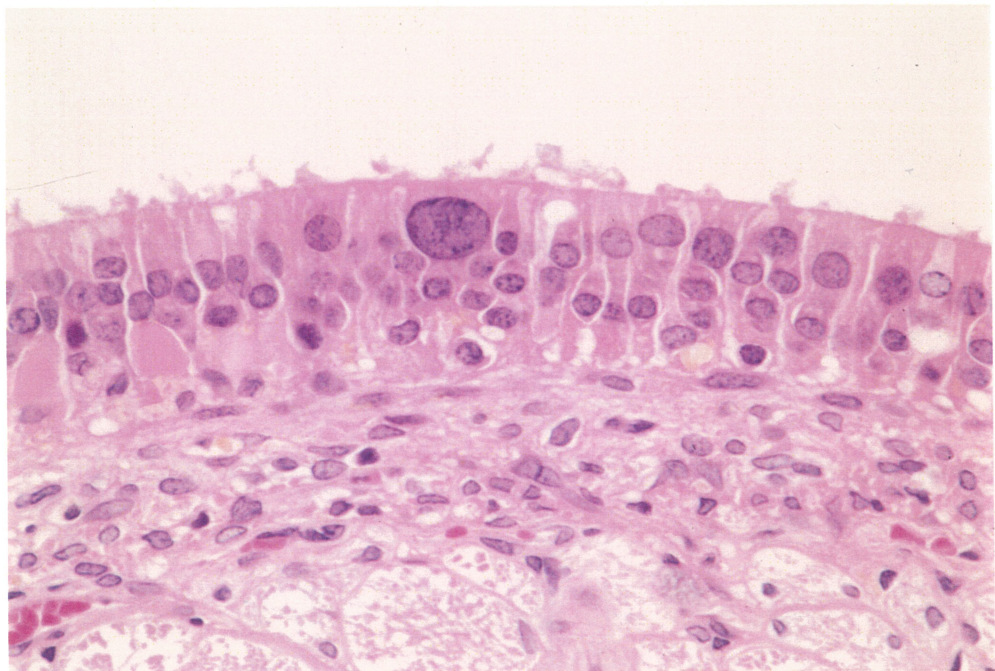
PHOTOGRAPH 11 NASAL CAVITY (LEVEL 3), NON-REMARKABLE
RAT, MALE, CONTROL, ANIMAL NO.0063-1009 (H.E., X60)



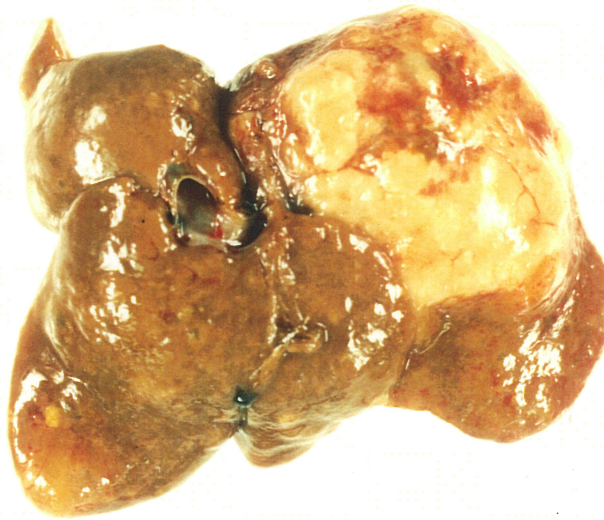
PHOTOGRAPH 12 NASAL CAVITY (LEVEL 3), HYDROPIC CHANGE AND SCLEROSIS:
LAMINA PROPRIA, ADHESION(ETHMOTURBINATE, NASAL SEPTUM),
ATROPHY:OLFACTORY EPITHELIUM, RESPIRATORY METAPLASIA
RAT, MALE, 5000ppm, ANIMAL NO.0063-1328 (H.E., X60)



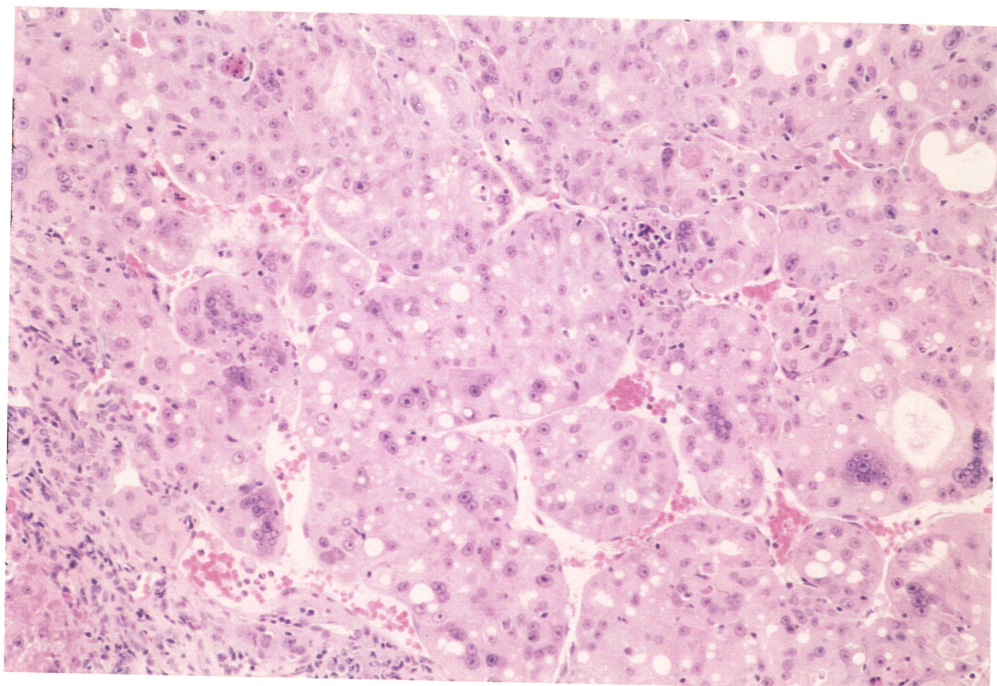
PHOTOGRAPH 13 NASAL CAVITY (LEVEL 2, NASOTURBINATE, RESPIRATORY EPITHELIUM),
NUCLEAR ENLARGEMENT:RESPIRATORY EPITHELIUM
RAT, MALE, 5000ppm, ANIMAL NO.0063-1307 (H.E., X300)



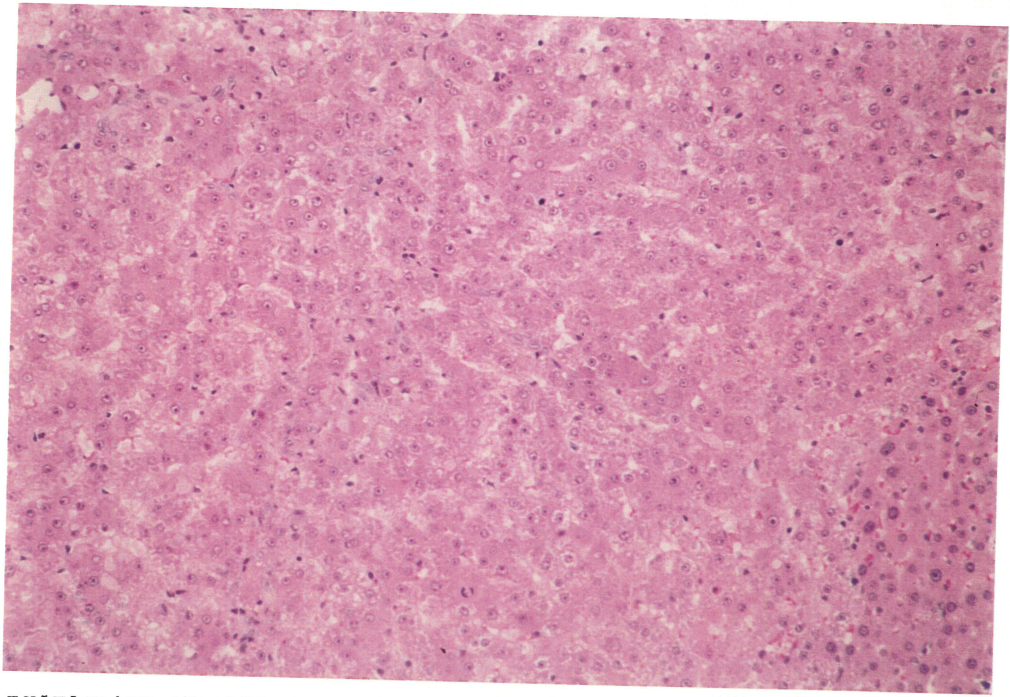
PHOTOGRAPH 14 NASAL CAVITY (LEVEL 3, ETHMOTURBINATE, OLFACTORY EPITHELIUM),
NUCLEAR ENLARGEMENT:OLFACTORY EPITHELIUM(SUPPORTING CELL),
ATROPHY:OLFACTORY EPITHELIUM
RAT, MALE, 5000ppm, ANIMAL NO.0063-1307 (H.E., X600)



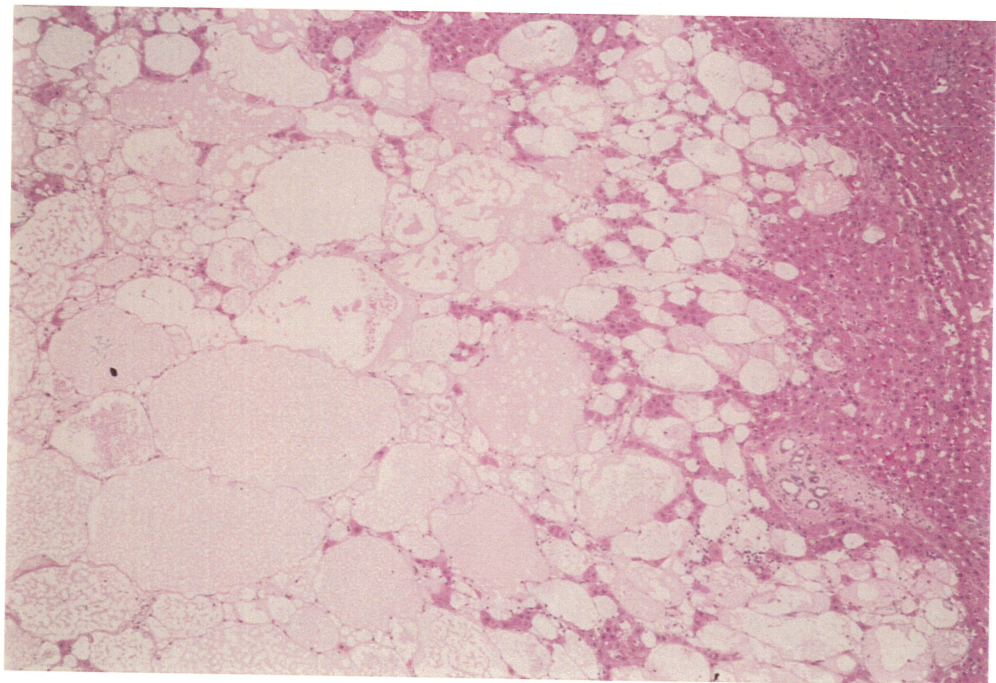
PHOTOGRAPH 15 LIVER, NODULE
RAT, MALE, 5000ppm, ANIMAL NO.0063-1332



PHOTOGRAPH 16 LIVER, HEPATOCELLULAR CARCINOMA
RAT, FEMALE, 5000ppm, ANIMAL NO.0063-2322 (H.E., X150)



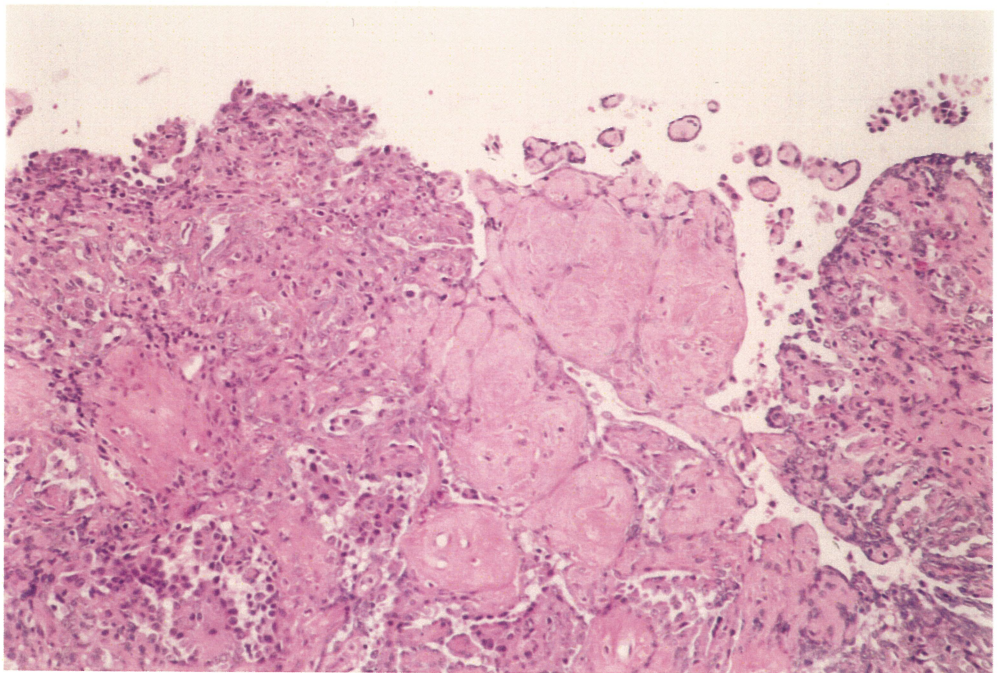
PHOTOGRAPH 17 LIVER, HEPATOCELLULAR ADENOMA
RAT, FEMALE, 5000ppm, ANIMAL NO.0063-2310 (H.E., X150)



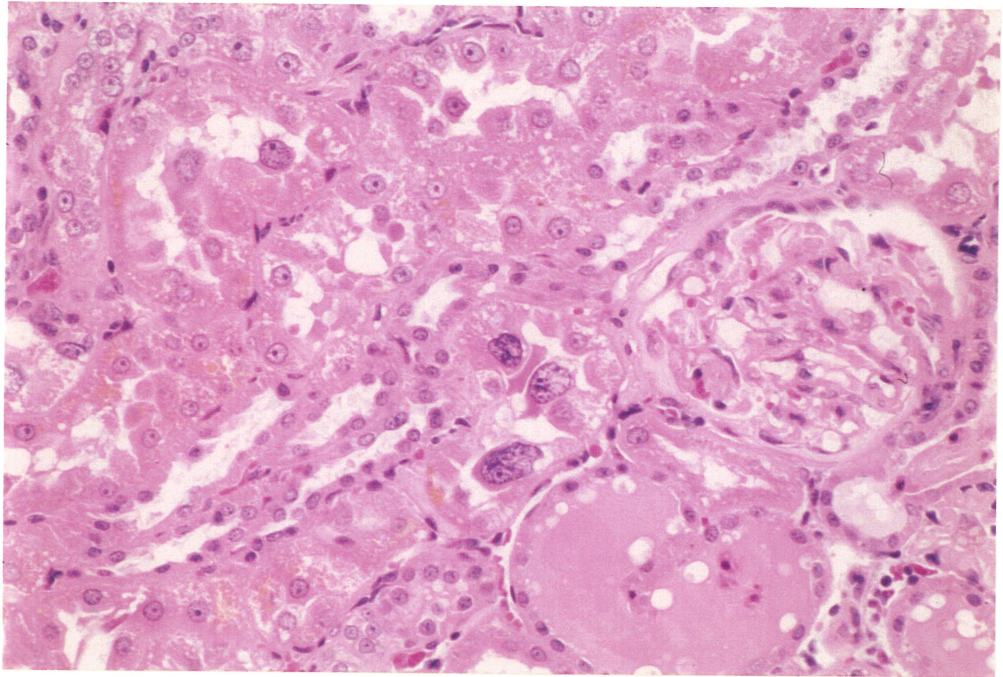
PHOTOGRAPH 18 LIVER, SPONGIOSIS HEPATIS
RAT, MALE, 5000ppm, ANIMAL NO.0063-1338 (H.E., X60)



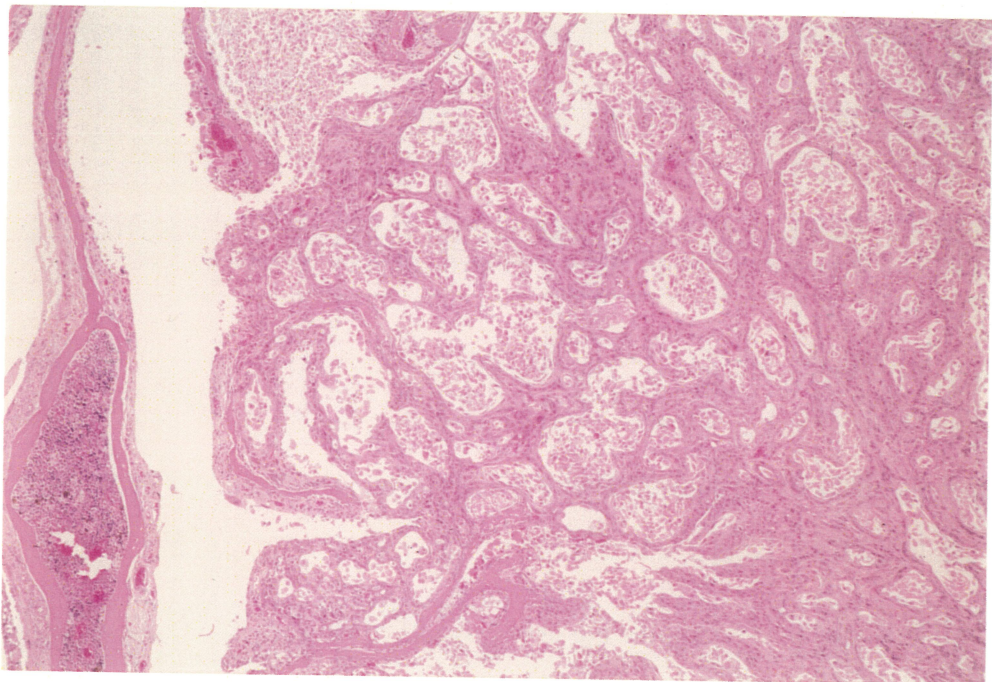
PHOTOGRAPH 19 PERITONEUM, NODULE(MULTIPLE)
RAT, MALE, 5000ppm, ANIMAL NO.0063-1311



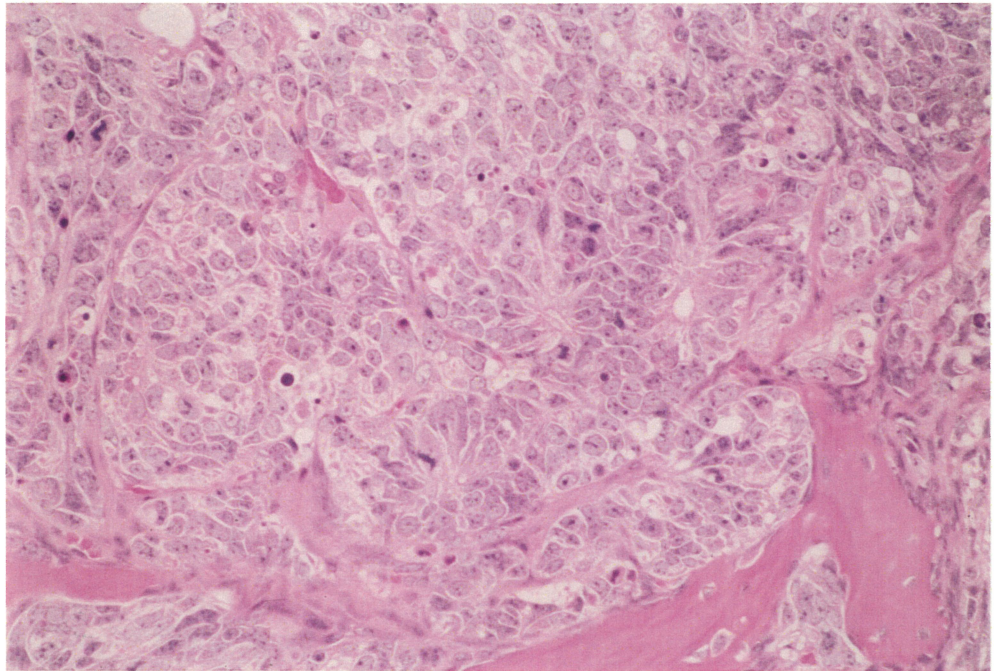
PHOTOGRAPH 20 PERITONEUM, MESOTHELIOMA
RAT, MALE, 5000ppm, ANIMAL NO.0063-1327 (H.E., X150)



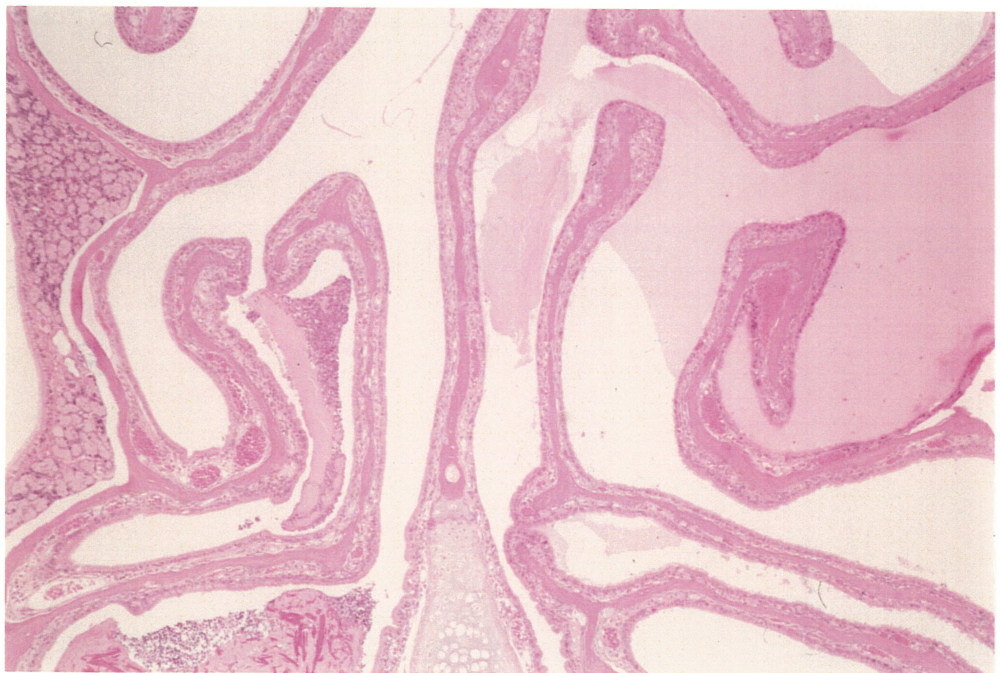
PHOTOGRAPH 21 KIDNEY, NUCLEAR ENLARGEMENT:PROXIMAL TUBULE
RAT, MALE, 5000ppm, ANIMAL NO.0063-1316 (H.E., X300)



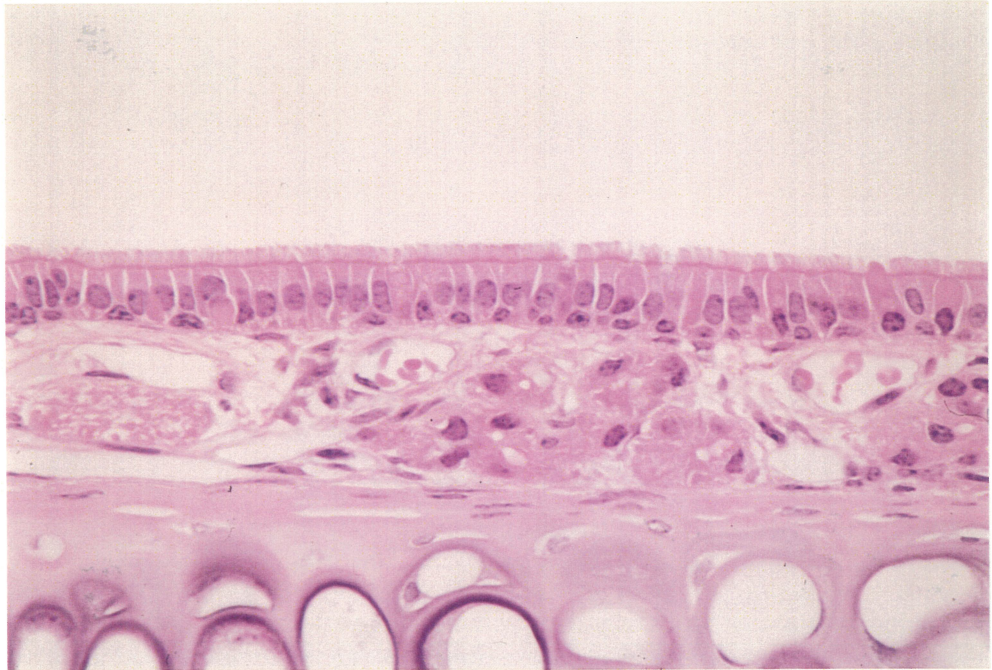
PHOTOGRAPH 22 NASAL CAVITY (LEVEL 2), ADENOCARCINOMA
MOUSE, FEMALE, 8000ppm, ANIMAL NO.0064-2337 (H.E., X60)



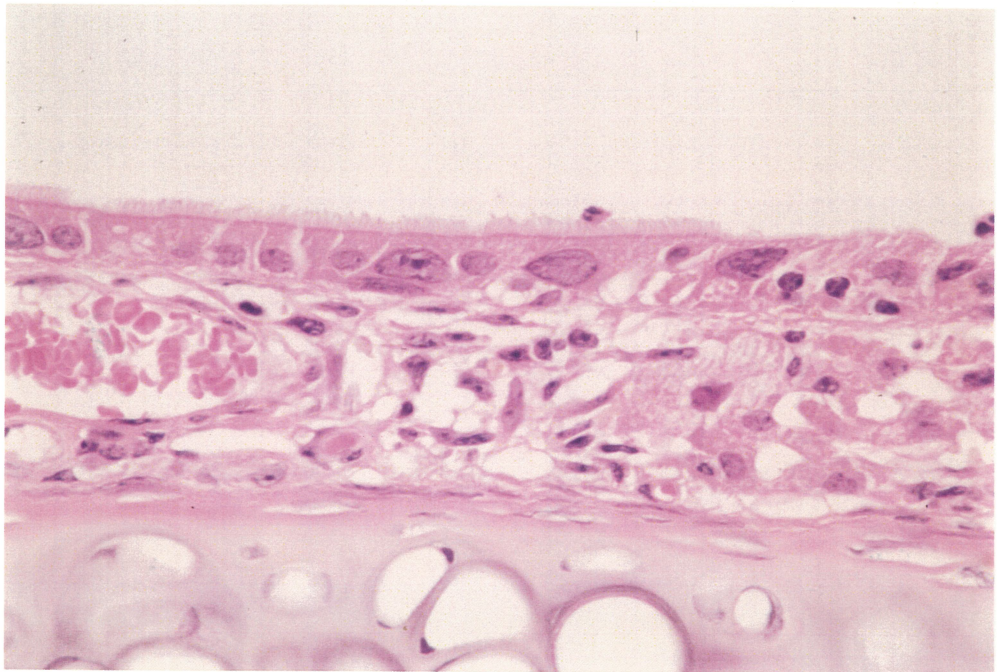
PHOTOGRAPH 23 NASAL CAVITY (LEVEL 3), ETHESIONEUROEPITHELIOMA
MOUSE, MALE, 8000ppm, ANIMAL NO.0064-1304 (H.E., X300)



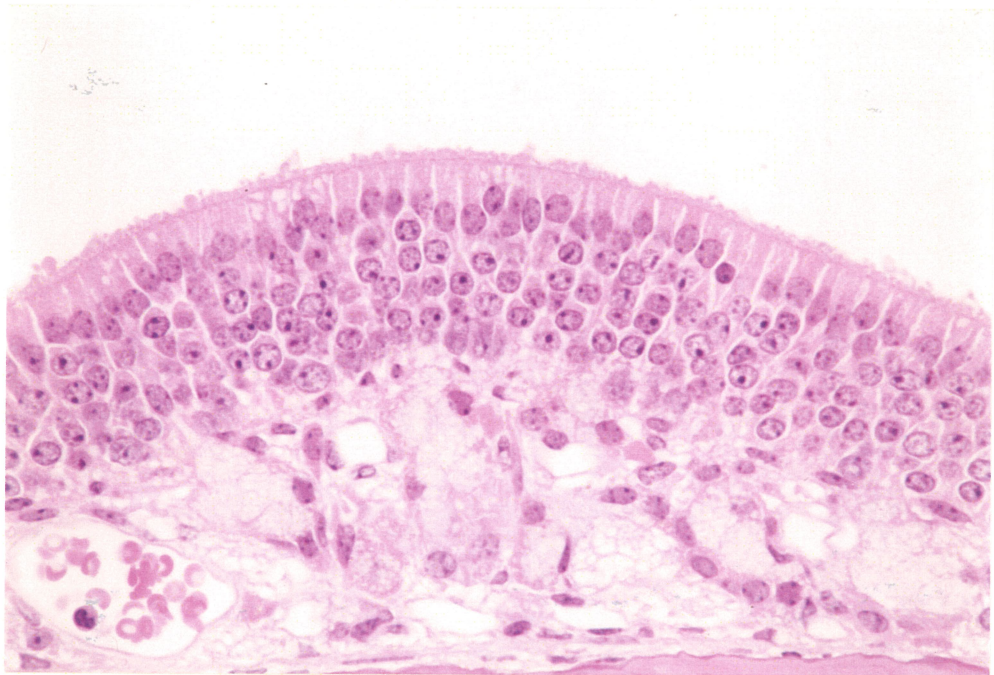
PHOTOGRAPH 24 NASAL CAVITY (LEVEL 3), RHINITIS(CATARRH),
ATROPHY:OLFACTORY EPITHELIUM
MOUSE, MALE, 8000ppm, ANIMAL NO.0064-1350 (H.E., X60)



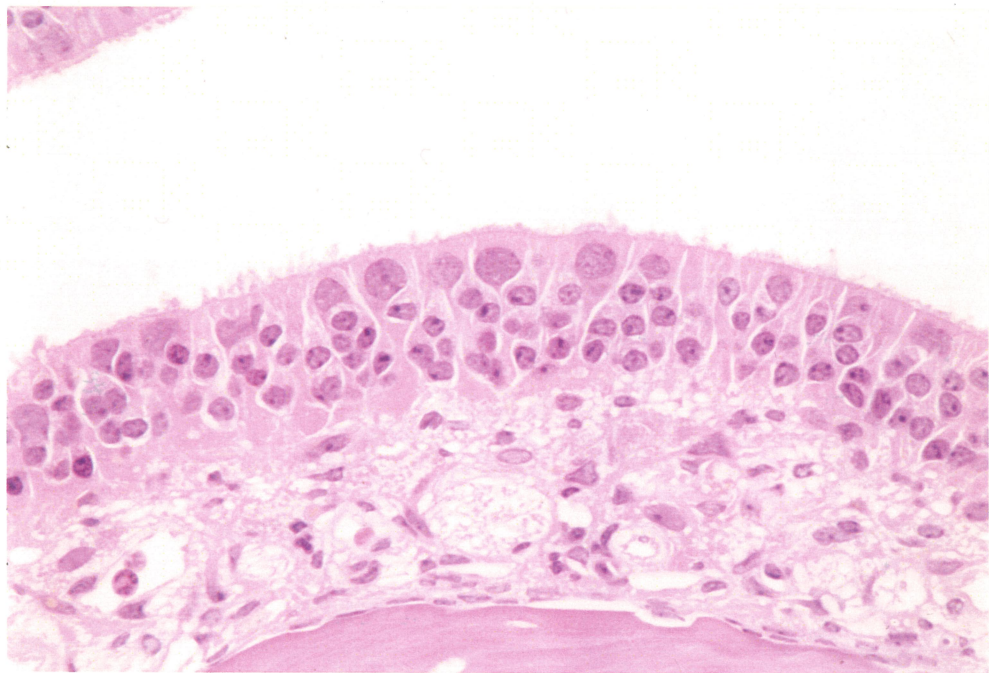
PHOTOGRAPH 25 NASAL CAVITY (LEVEL 2, NASAL SEPTUM,
RESPIRATORY EPITHELIUM), NON-REMARKABLE
MOUSE, MALE, CONTROL, ANIMAL NO.0064-1032 (H.E., X600)



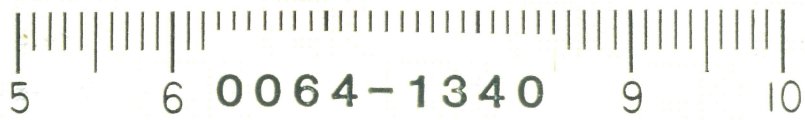
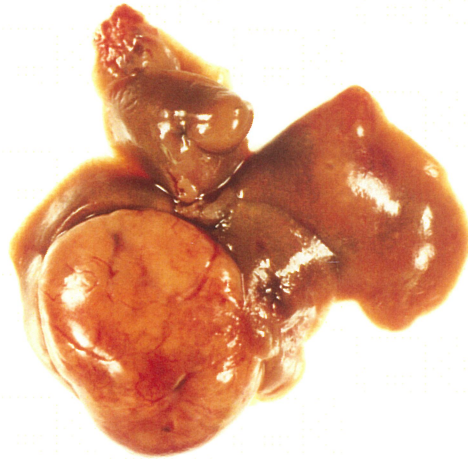
PHOTOGRAPH 26 NASAL CAVITY (LEVEL 2, NASAL SEPTUM,
RESPIRATORY EPITHELIUM),
NUCLEAR ENLARGEMENT:RESPIRATORY EPITHELIUM
MOUSE, MALE, 8000ppm, ANIMAL NO.0064-1307 (H.E., X600)



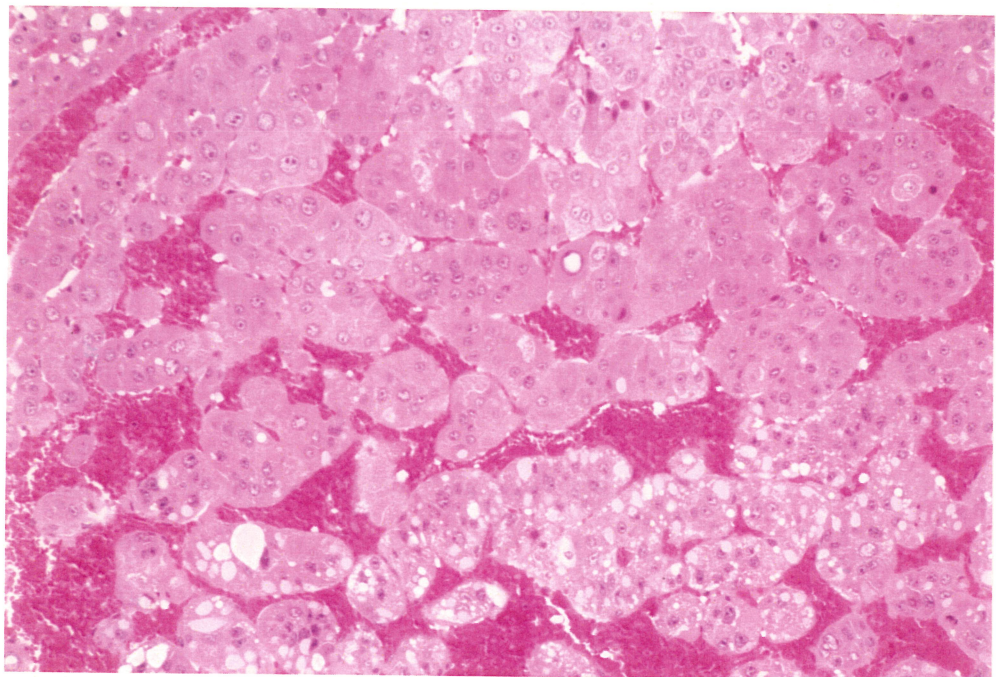
PHOTOGRAPH 27 NASAL CAVITY (LEVEL 3, NASAL SEPTUM, OLFACTORY EPITHELIUM),
NON-REMARKABLE
MOUSE, MALE, CONTROL, ANIMAL NO.0064-1032 (H.E., X600)



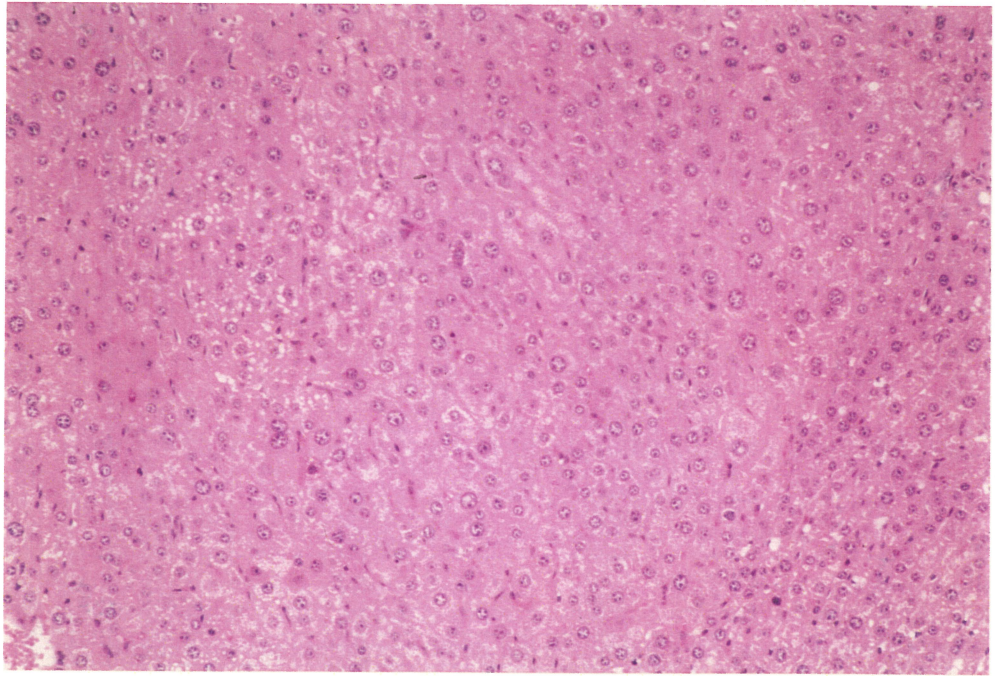
PHOTOGRAPH 28 NASAL CAVITY (LEVEL 3, NASAL SEPTUM, OLFACTORY EPITHELIUM),
NUCLEAR ENLARGEMENT:OLFACTORY EPITHELIUM(SUPPORTING CELL),
ATROPHY:OLFACTORY EPITHELIUM
MOUSE, MALE, 8000ppm, ANIMAL NO.0064-1347 (H.E., X600)



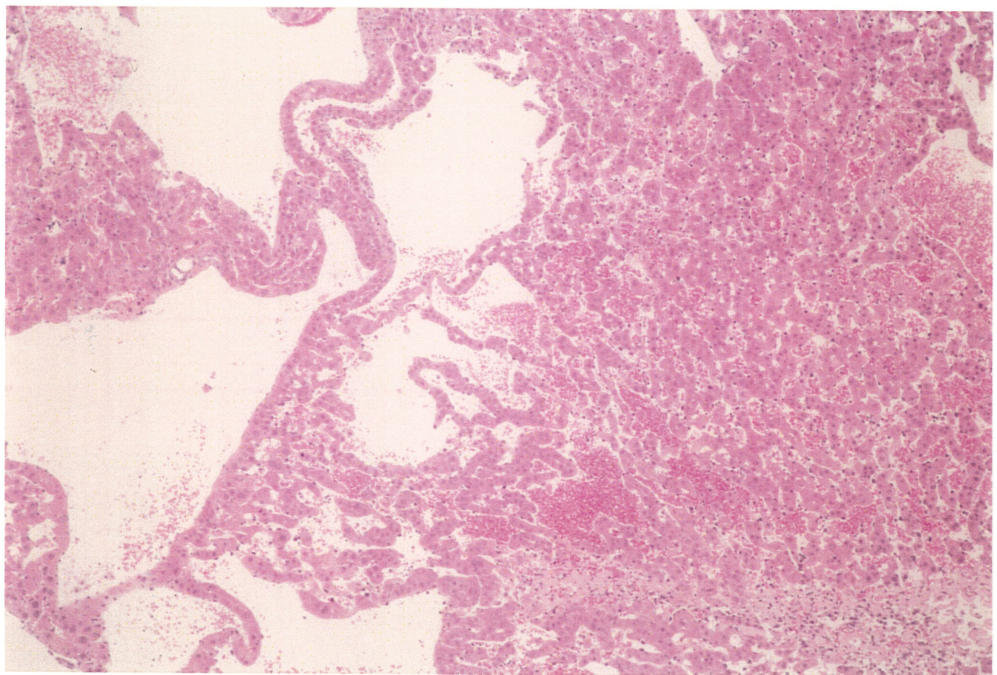
PHOTOGRAPH 29 LIVER, NODULE
MOUSE, MALE, 8000ppm, ANIMAL NO.0064-1340



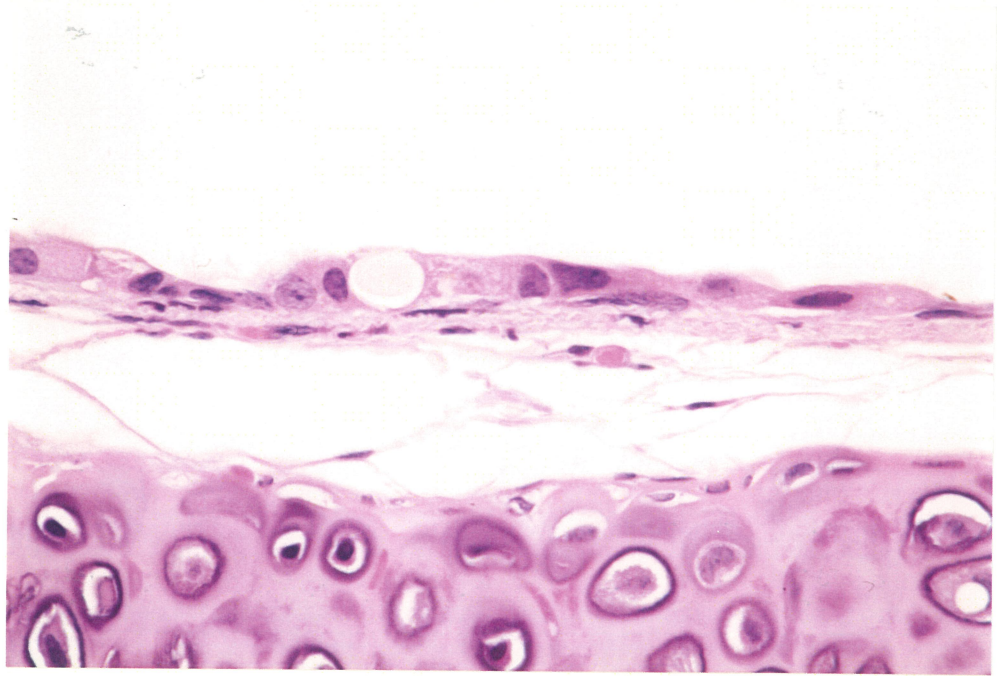
PHOTOGRAPH 30 LIVER, HEPATOCELLULAR CARCINOMA
MOUSE, MALE, 8000ppm, ANIMAL NO.0064-1339 (H.E., X150)



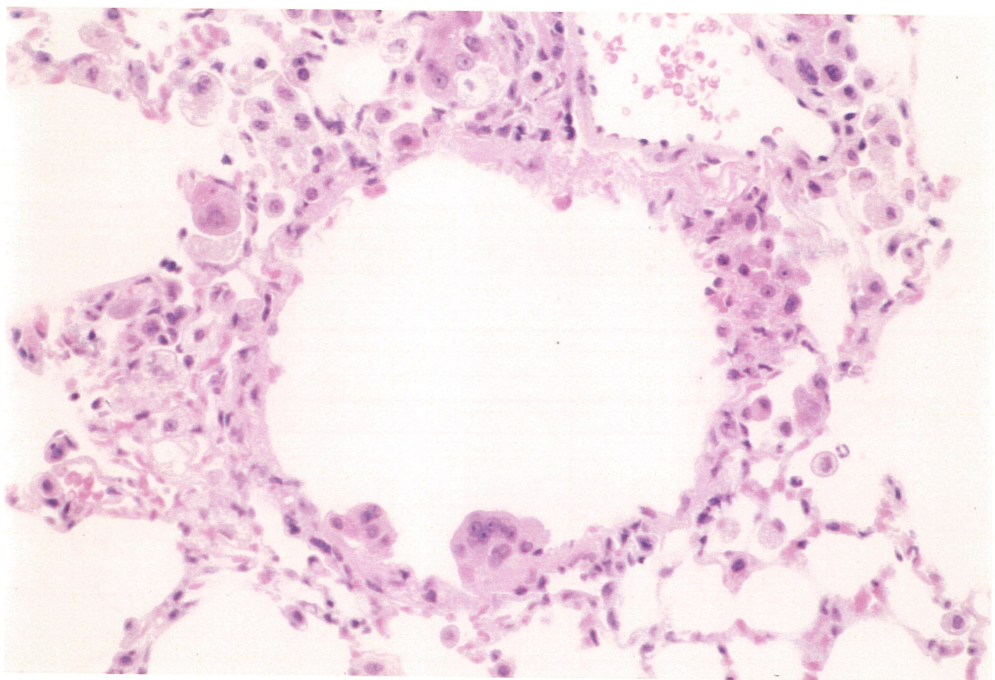
PHOTOGRAPH 31 LIVER, HEPATOCELLULAR ADENOMA
MOUSE, FEMALE, 2000ppm, ANIMAL NO.0064-2203 (H.E., X150)



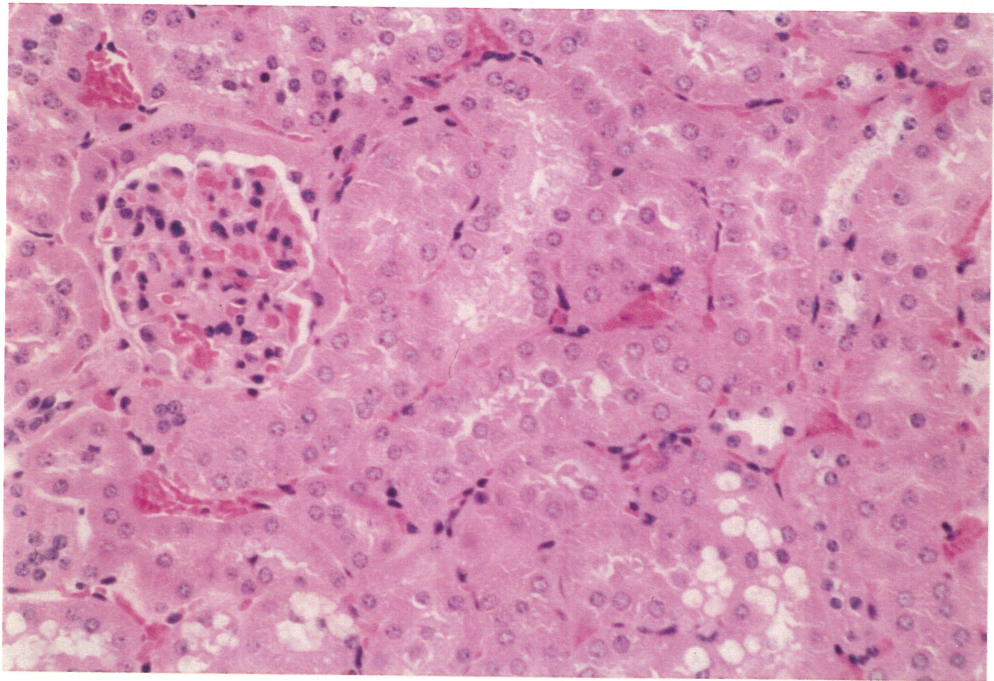
PHOTOGRAPH 32 LIVER, ANGIECTASIS
MOUSE, MALE, 8000ppm, ANIMAL NO.0064-1324 (H.E., X60)



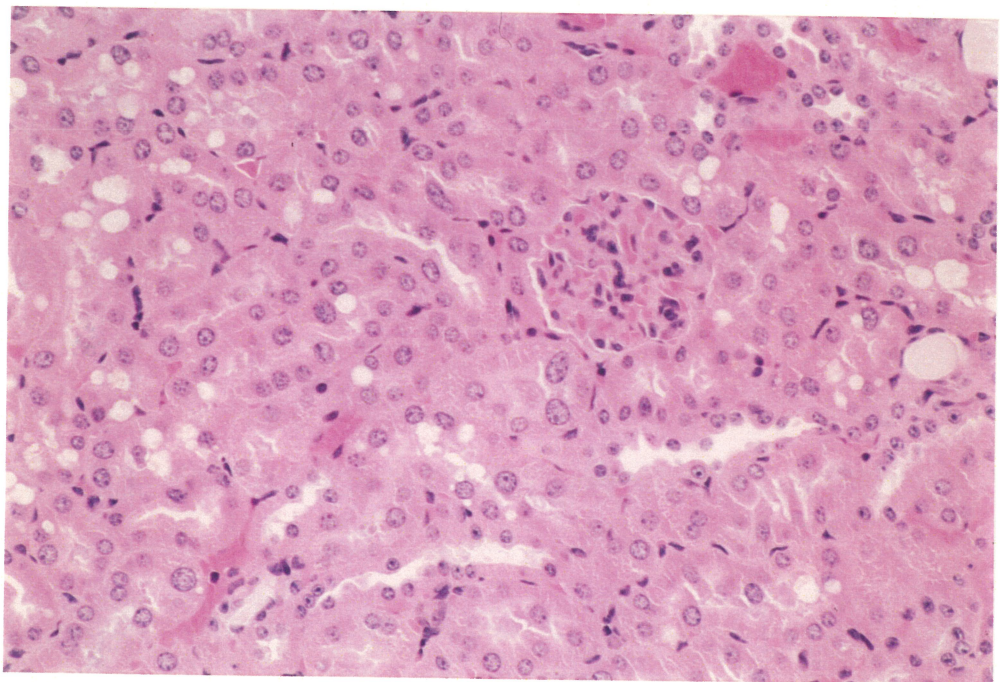
PHOTOGRAPH 33 TRACHEA, NUCLEAR ENLARGEMENT AND ATROPHY:EPITHELIUM,
MOUSE, MALE, 8000ppm, ANIMAL NO.0064-1321 (H.E., X600)



PHOTOGRAPH 34 LUNG, NUCLEAR ENLARGEMENT AND ATROPHY:BRONCHIAL EPITHELIUM,
ACCUMULATION OF FOAMY CELL
MOUSE, MALE, 8000ppm, ANIMAL NO.0064-1310 (H.E., X300)



PHOTOGRAPH 35 KIDNEY, NON-REMARKABLE
MOUSE, MALE, CONTROL, ANIMAL NO.0064-1013 (H.E., X300)



PHOTOGRAPH 36 KIDNEY, NUCLEAR ENLARGEMENT:PROXIMAL TUBULE
MOUSE, MALE, 8000PPM, ANIMAL NO.0064-1302 (H.E., X300)